

MURRAY STREET AXIS (including Princes Wharf)

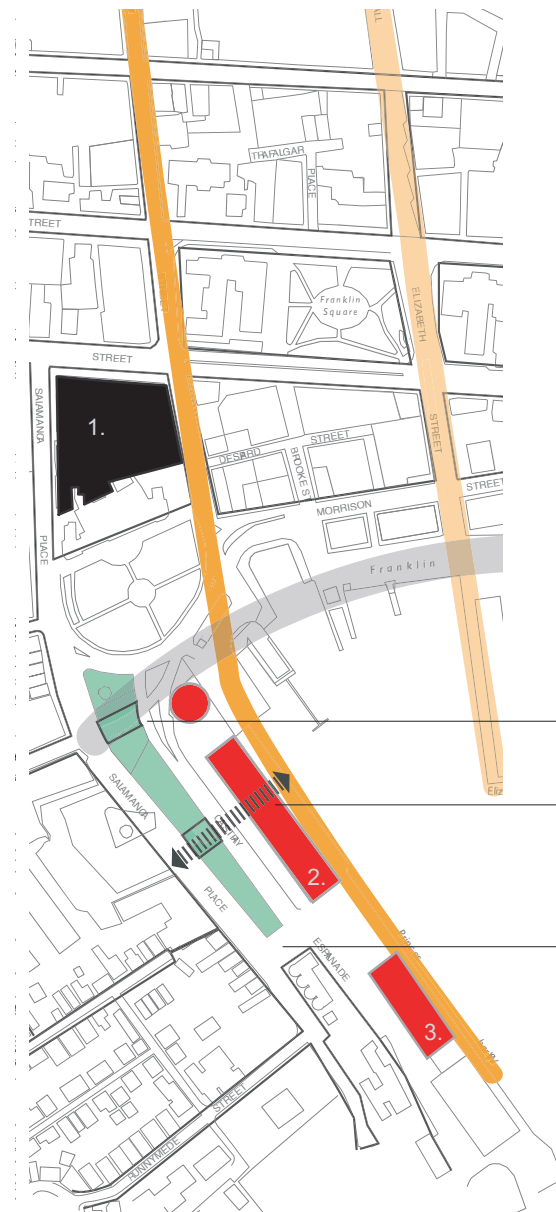
The Murray Street Axis is substantially formed and functional.

The axis suffers through:

- a lack of street frontage activities between the CBD and Salamanca Place;
- confusing and indirect pedestrian and vehicular ways – especially around the western end of Princes Wharf;
- under-used structures and spaces on Princes Wharf; and
- limited public use and access on the wharf edge.

Successfully reactivating and redeveloping the axis will see:

- greater community and commercial use of the under-used spaces and buildings,
- clearer, more accessible and safer pedestrian ways and roads,
- new activities at street level, buildings and public space improvements.



Closure of roads/carparks to extend and connect Salamanca lawns

Pedestrian access through building from Salamanca Place to wharf edge

Salamanca Place and Castray Esplanade with the capacity for closure for temporary events

1. Salamanca/Davey/Murray

Possible activities include residential and visitor accommodation, mixed commercial.

Significant heritage sites conserved and recycled.

Entrances and activities on all street frontages.

2. Princes Wharf No. 1

Possible activities include public space for events, activities and exhibitions and mixed retail/commercial use.

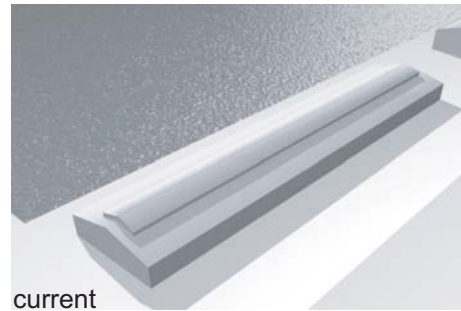
Redevelop within existing building envelope and footprint recycling the structural elements.

Structures to allow for greater transparency and access through building from Castray Esplanade to Wharf Edge.

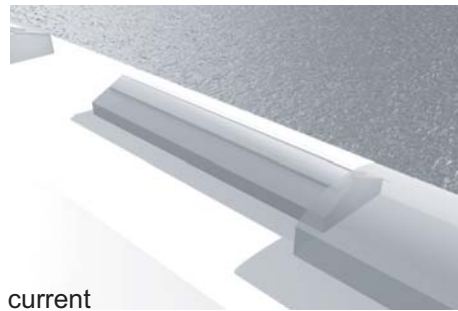
3. Princes Wharf No. 2

Possible activities include cruise, naval and small ship berth., visitor accommodation and mixed commercial.

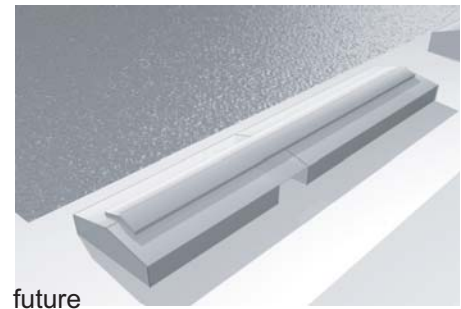
Expanded building envelope and footprint.



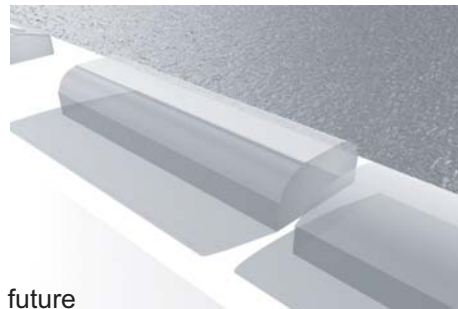
current



current



future



future

PRINCES WHARF NO. 1

PRINCES WHARF NO. 2